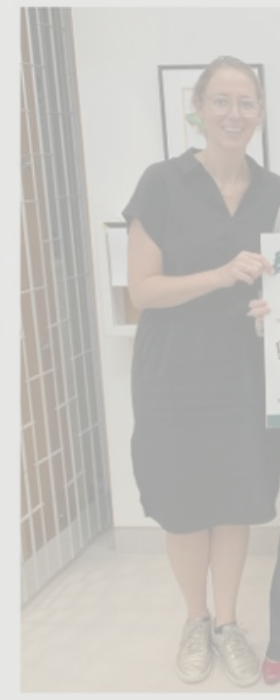


ANNUAL REPORT 2023





ELGIN - ST. THOMAS
Community
Foundation



ELGIN - ST. THOMAS
Community
Foundation

The story our new logo tells:

The water symbolizes the **ever-changing landscape** of Elgin and St. Thomas, reflecting the spirit of evolution and adaptability.

The subtle line within the design at the base of the trunk represents the **bridge we build**, connecting donors with charitable causes that align with their giving interests.

The trunk is a dual symbol, signifying both the **communities we support and the change-makers within** ~our donors and charitable organizations actively engaged in transformative work, fostering positive social change.

The green leaves evoke themes of **renewal and growth** and capture the essence of donor dollars, originating from the heart.

The red heart, often considered the community's core, extends its significance to encompass the many **giving hearts** in Elgin and St. Thomas.

It stands as a collective representation of the community's generosity and compassion.

As you can see our tree has evolved, just like the foundation, however, consistent in our support for the communities we call home.

A full-length photograph of a middle-aged man with grey hair, smiling at the camera. He is wearing a bright blue zip-up jacket over a dark collared shirt, dark blue jeans, and brown leather shoes. He is standing in front of a light-colored brick wall. The jacket has a small logo on the left chest.

A MESSAGE FROM THE BOARD CHAIR

Our Community Foundation Continues to Evolve

In 2023 the Elgin-St. Thomas Community Foundation remained dedicated to identifying and supporting the needs of our community. We were pleased to welcome Kim Robinson, Mike Broadhead and Bilal Khalife to our active board of directors, enriching our team with their expertise and commitment.

Under the guidance of our board, Natasha effectively engaged with the community, embodying the spirit of our strategic plan which we carefully developed and are executing. The board actively participated in community events, including supporting the establishment of the new Indwell building “The Station”. Not only did we provide financial backing, but many of us also contributed hands-on support by assisting in the assembly of furniture for the apartments to ensure a timely opening for them.

We were proud to host our inaugural Business After 5 event in collaboration with the St. Thomas Chamber of Commerce. Our board was in attendance wearing shirts displaying our new logo and showcasing our upcoming 100 Plus People Who Care event.

Furthermore, our board members actively collaborated with community leaders to understand the challenges facing Elgin and St. Thomas, such as housing and homelessness, education and workforce, mental health, substance abuse and public safety. This gave us insight as the charity of charities, advocating the essential needs of our community to our fund advisors. These insights also gave us clear direction for the Great-EST Needs Fund which provided grants to organizations such as Fresh Start Support Services, The YWCA, YMCA, Neighborhood Outreach for Kids and Second Stage Housing.

Natasha and I had the opportunity to attend the Community Foundations of Canada Convention in Toronto this past June. This was a very uplifting event where we were able to discuss and share ideas with other community foundation leaders on many different relevant topics giving us a better understanding of effective community development strategies.

2024 has started off to be an exciting year as we celebrate our 20th anniversary, marking two decades of serving the needs of our community.

Scott Willoughby

MESSAGE FROM YOUR EXECUTIVE DIRECTOR

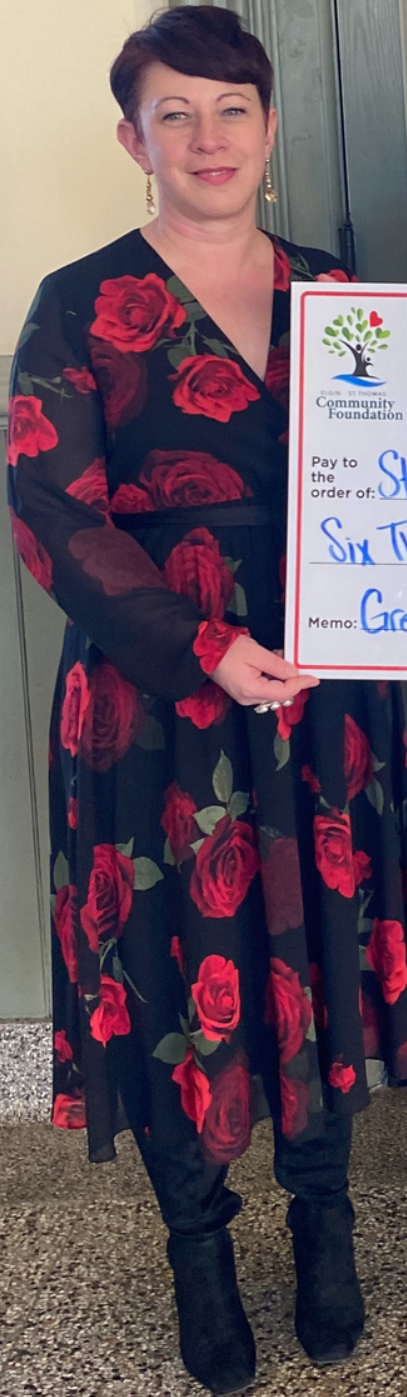
In 2023, the Elgin-St. Thomas Community Foundation embarked on an ambitious journey of growth and impact, guided by the launch of our comprehensive three-year strategic plan. This plan outlined our revitalized vision, mission statement, and three fundamental objectives: Brand Awareness, Community Leadership, and Sustainability and Asset Growth. Throughout the year, we dedicated ourselves to the pursuit of these goals, achieving significant progress in each domain.

Brand Awareness:

Our efforts to amplify our brand presence and visibility within the community yielded substantial results. We organized a successful Business After 5 event in October, leveraging the occasion to introduce our "100 People Who Care" campaign. Through increased presence on social media platforms like Facebook and Instagram, we shared impactful stories, including the success of initiatives like the Walking School Bus Neighbourhood Outreach for Kids (NOK). Furthermore, we maintained an active presence by attending community gatherings such as the Mayor's Luncheon, Impact Awards, Business After 5 meetups, the YWCA Summer Social Event, and the United Way Harvest Lunch. As the year drew to a close, we unveiled a new logo symbolizing the dynamic evolution of Elgin and St. Thomas, representative of our spirit of heart, adaptability and progress.

Community Leadership:

Our foundation emerged as a pillar of community leadership, actively engaging with key stakeholders and addressing pressing issues within our communities. We restructured our granting committee to emphasize community engagement, facilitating dialogues with influential leaders to gain profound insights into our community's most urgent needs. Attending pivotal forums and events such as the Homelessness Coalition and the Women-Led Family and Homelessness Community Forum, we listened intently to experiential accounts, recognizing the escalating demand for services—such as the staggering 3321 women who accessed Violence Against Women services in 2022, a figure exacerbated by the pandemic. Additionally, we proudly sponsored the Icelandic Prevention for Youth and Substance Abuse Community Forum, a model dedicated to nurturing a supportive environment for youth engagement. Through immersive tours and volunteer engagements at various organizations—including Harvest Outreach, Fresh Start, The Inn, Steam Centre, and Indwell's The Station—we garnered invaluable firsthand insights into community needs and impacts.



Sustainability and Asset Growth:

Our steadfast commitment to sustainability and asset expansion was evident in our concerted efforts to broaden our donor base and expand assets under management. The successful transformation of our "100 People Who Care" initiative into "200 People Who Care" underscored heightened community engagement and support. Moreover, we witnessed substantial growth in our assets, empowering us to allocate significant sums to bolster crucial community initiatives.

Other Highlights:

In addition to advancing our core objectives, we were privileged to be chosen as a partner in the Community Services Recovery Fund, securing \$284,000 for distribution across Elgin-St. Thomas. Furthermore, we extended financial support to numerous vital initiatives, including the provision of furnishings for apartments at Indwell's Queen Street location and disbursing grants to organizations such as YWCA, Hospice, Character Curtain Calls, Fresh Start, and CAN.

Conclusion:

In summary, 2023 was a year of remarkable growth and impact for the Elgin-St. Thomas Community Foundation. Our commitment to our strategic objectives, coupled with the unwavering support of our donors and partners, has positioned us as a driving force for positive change in our communities. As we look ahead, we remain dedicated to our mission of building a stronger, more vibrant community for all.

Natasha Newby

Board of Directors



Scott Willoughby, Board Chair



Jeff Shaw, Vice-Chair



Michael Broadhead, Treasurer



Kim Robinson, Secretary



Brian Bolt, Director



Janet Taylor, Director

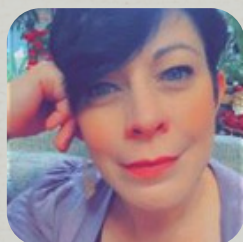


Bilal Khalife, Director



Hilary Vaughn, Director

Staff

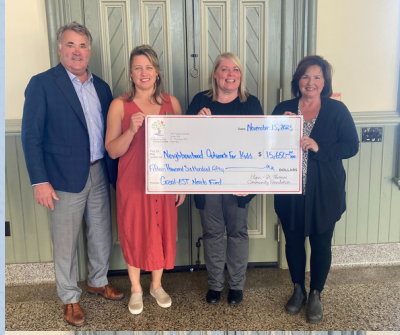


Natasha Newby
Executive Director



Kelly Scott
Administrative Assistant

GREAT-EST NEEDS FUND GRANT RECIPIENTS



Neighbourhood Outreach for Kids Elgin-Youth Friendly Neighbourhoods

This project is a transformative endeavour aimed at fostering community cohesion and empowering our youngest members to actively shape their neighbourhoods.

Breaking down systemic barriers and promoting community well-being.



YWCA St. Thomas-Elgin-Housing Based Case Manager (HBCM)

A means to housing stability for at risk and/or homeless youth in St. Thomas-Elgin.

The HBCM will work to break down barriers one at a time helping to improve housing stability for our youth



YMCA of Southwestern Ontario-Community Starts Here, Thriving Kids and Youth Financial Assistance Program

The YMCA is often the first place children learn to swim, where many teenagers get their first jobs, where families grow stronger together, and where seniors overcome isolation and stay connected. Our accessible programs are tailored to benefit local community members of all ages and life stages. We create a centre of community where everyone can work towards reaching their goals in a positive and supportive environment.



Fresh Start Support Services-Accessible Communal Space

Fresh Start has observed a doubling of displaced and isolated women-led families knocking on their doors for help. This Communal Space will address this need by creating a safe, trauma-informed, accessible communal space, for vulnerable mothers to connect and acquire life skills, while learning to self-regulate.



St. Thomas-Elgin Second Stage Housing-Residential Housing Program

To offer supports to women and children that increase their ability to secure and maintain safe housing within our community. By creating this safe environment, we are empowering the women who access our services to break the cycle of abuse, which impacts their, and their children's futures.

2023 HIGHLIGHTS

TOTAL GRANTS TO DATE,
2003 – 2023

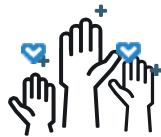
\$7,317,478



**HARDWORKING
BOARD
MEMBERS**

188

GRANTS AND
DISTRIBUTIONS
AWARDED TOTTALLING
\$1,084,276



**COUNTLESS
VOLUNTEER
HOURS WORKED**

CONDENSED YEAR END STATEMENT (DEC 31, 2023)

<u>ASSETS</u>	2023	2022
Current Assets	43,565	71,578
Collections	6,700	6,700
Investments	10,931,313	11,212,982
Total Assets	10,981,578	11,291,260
<u>LIABILITIES</u>		
Current Liabilities	31,692	17,339
<u>FUND BALANCES</u>		
Operating Fund	50,736	47,153
Restricted Funds	1,017,552	1,408,412
Endowed Funds	9,881,589	9,818,356
TOTAL FUND BALANCES	10,949,886	11,273,291
TOTAL LIABILITIES & FUND BALANCES	10,981,578	11,291,260

\$9,881,598

ENDOWMENT FUNDS

AS OF DEC. 31, 2023

\$10,931,313

TOTAL INVESTED ASSETS

\$1,017,552

RESTRICTED FUNDS

Endowment Funds

Endowment Fund principal is invested and the interest on investment flows back to local charities in perpetuity. The Community Foundation's wide range of endowment and restricted funds allows great flexibility for anyone to tailor a Fund specific to their interests.

Community Fund

Supporting charitable activities in a particular community or geographic area.

\$115,887

Donor Advised Funds Funds where donors develop grant criteria and direct the distribution of income from their fund.

\$8,071,166

Donor Designated Fund Funds which support particular agencies, organizations, or a charitable activity as identified by the donor at the time of the gift.

(including Agency Funds)

\$468,741

Scholarship Fund Assisting students who go on to study at a post-secondary educational institution.

\$234,068

Great-EST Needs Fund Unrestricted funds were established to provide the organization with the flexibility to direct grants where they have the greatest potential to contribute to our community's well-being.

\$991,736

Restricted Funds

ESCF Operations Stability Fund
Ongoing support of ESCF operations and administrative support of programs.

\$105,831

Flow-Through Funds

This service is available for Donors with an established Endowment Fund. The Foundation receives donations, issues income tax receipts and subsequently grants to a designated charitable organization or organizations on behalf of the Donor.

\$509,930

Funds Held For Others Registered charities or foundations entrust the Foundation with short-term management of Funds.

\$1,971

Invested Flow-Through Funds

An invested Flow-through Fund is similar to a Donor Advised or Donor Designated Fund with the exception that both fund capital and earned income may be granted. These funds may continue granting until all fund capital and earned income has been depleted.

\$399,820



BELIEF IN MY POTENTIAL

Dear Elgin-St. Thomas Community Foundation,

When I applied for the Barrie Family Scholarship back in 2019 I had only a small sense of the impact it would have on my university experience. I truly cannot overstate the profound effect it had on my journey to complete my Bachelor of Science in Kinesiology at the University of Waterloo.

One of the main reasons I applied for this scholarship, like many of my peers, was to relieve the financial stress of being solely responsible for paying for tuition, rent, and groceries on my own while away at school. The financial assistance provided by the Barrie Family Scholarship allowed me to alleviate this stress and focus more time and energy into my academic and extracurricular pursuits.

Not only did this scholarship relieve my financial worries, but it also uplifted my spirits by reaffirming my belief in the power of hard work and dedication. I felt incredibly motivated to hold myself to a very high standard throughout my undergrad. I knew that I needed to continue to earn this scholarship each year through discipline and dedication to learning and receiving high grades in all of my classes. As a result, I will be graduating with Dean's Honours for maintaining an above 85% average each year.

I believe the greatest gift I received through being awarded this scholarship was the gift of time. The financial assistance I received meant that I was not forced to find a part-time job throughout the school year, which allowed me to explore additional learning opportunities outside of the classroom. As students, it can be very difficult to find paid positions in your field of interest. Alternatively, there are many volunteer opportunities available to gain experience and I did my best to capitalize on these unpaid opportunities. I spent a lot of my time volunteering in labs on campus, at a local elementary school, and working as a Student Trainer with the varsity sports teams on campus. All of which gave me the opportunity to gain invaluable hands-on experience in potential career paths for my future.

To conclude, I would like to extend my deepest gratitude to those from the Elgin-St. Thomas Community Foundation for your generosity, support, and belief in my potential. The lessons I've learned and the skills I acquired throughout my degree are ones that I will carry with me for the rest of my life. I am committed to honouring your trust by striving for excellence in all my future endeavours as I will be attending Western University for Teachers College this September.

Sincerely,

Jalyn Smart

OUR FAMILY OF FUNDS & THEIR 2023 GRANTS

The name of each fund is followed by the fund's purpose and list of recipient charities.

#vegotyourback911 Fund

Supports charities with a focus on first responders' mental health.

Badge of Life Canada

Boots On The Ground Peer Support for First Responders (AB/ON)

Camp Faces

Can Praxis EAL

Canadian Fallen Firefighters Foundation

Canadian Paramedic Memorial Foundation

Homes for Heroes Foundation

Ontario Police Memorial Foundation

Operation Feed

The Phoenix Canine Initiative

V-EH! Veterans & Everyday Heroes

Valhalla Project Niagara

Active Living Scholarship Fund

Established by the OH!Ontario International Friendship Games Association to support postsecondary education in area of physical activity.

Clark Jackson

Karter Rowsom

Barrie Family Community Fund

A Fund established by the estate of Marianne Barrie for the benefit of charities in St. Thomas and surrounding areas.

Elgin Residential Hospice

Barrie Family Scholarship Fund

A Fund established by the estate of Marianne Barrie to grant scholarships annually to students in financial need graduating from St. Joseph's Catholic High School in St. Thomas and attending postsecondary institutions.

Ben Carr

Will Mantel

Madeleine Lee

Bud and Melba Marr Fund

Supports regional and local charities with a focus on health care, community, and youth.

Fresh Start Support Services

The Salvation Army

United Way Elgin Middlesex



Carole Watson Fund

This fund is established to support programs and services of Violence Against Women Services Elgin County

Violence Against Women Services Elgin County

Colchester Fund

An anonymous family fund supporting local and regional charities.

Easter Seals Ontario

STEGH Foundation

St. Thomas-Elgin Christmas Care

St. Thomas Elgin Food Bank

St. Thomas Elgin Second Stage Housing

Teen Challenge Farm

The Arthritis Society of Ontario

The Lung Association

War Amps - Ontario

Community Service Recovery Fund – NEW Fund 2023

In conjunction with Community Foundations of Canada and Government of Canada.

Elgin – St. Thomas Community Foundation issued grant cheques:

Big Brothers Big Sisters of St. Thomas-Elgin

Elgin Residential Hospice

Elgin-St. Thomas Youth Employment Counselling Centre

Kettle Creek Conservation Authority

Pearce Williams United Church Christian Centre

STEAM Education Centre

Community Foundations of Canada issued grant cheques:

The Phoenix Canine Initiative

Victim Services Elgin

Costello Music & Storytelling Scholarship Fund

Established by Mickey and Gerry Costello, this Fund celebrates talented music and storytelling performers from Elgin County through scholarship awards.

Madison Carrick

Dennis Redman Memorial Scholarship Fund

Established in memory of deceased firefighter Dennis Redman, this Fund Supports postsecondary education in firefighting and emergency services.

Nadia Rodrigue

Marissa Morningstar

Don and Helen Black Fund

This fund is established to support of women and girls in St. Thomas and Elgin County.

Fresh Start Support Services

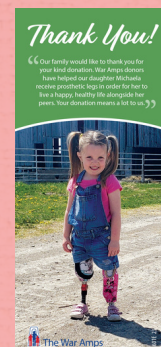
Dutton Dunwich – West Elgin Community Fund includes Fred and Joanne Groch Fund, Galbraith Family Fund, and Norma I. McMillan Fund

Established to attract donations and support charitable causes in Dutton Dunwich - West Elgin area.

Tyrconnell Heritage Society – AED Machine

YMCA of Southwestern Ontario

West Elgin Community Health Centre – Community Garden



Elgin CFDC-Helen LeFrank Scholarship Fund

Provides an annual scholarship to recognize youth interested in a career in business and/or entrepreneurial disciplines.

Anna Devries

Estate of Donna Vera Bushell

Fund to continue support of Music Festival.

St. Thomas Christian Church – St. Thomas Music Festival

Doris Evans Award

Evans Tree Fund

Established as part of Estate of Donna Vera Bushell, to annually support worthy tree-planting projects.

Port Stanley Village Association Fund – 200 Trees for 200 Years

Every Kid Rox

Supporting children and youth with a dual diagnosis (a combination of a developmental disability with a mental health problem), and respite for their caregivers.

Every Kid Rox

Forest Cliff Camp Inc.

Family YMCA of St. Thomas - Elgin Endowment Fund

An agency fund to ensure ongoing support for programs and services.

YMCA of Southwestern Ontario

Galbraith Family Fund-The John Kenneth Galbraith Leadership Award

The John Kenneth Galbraith Leadership Award has been developed by the Galbraith Family Fund in honour of the renowned economist, diplomat and author John Kenneth Galbraith, born and raised in Dutton Dunwich.

Karter Rowsom

Great-EST Needs Fund - includes Bill and Linda Tarry Fund, Collier Family Fund, Doug Tarry Limited Community Fund, Mable Blakley and Harold O'Connor Family Fund, and Mac and Joyce Hepburn Fund:

Address some of the local area's most pressing issues, greatest needs or a charitable direction that will start the community down this road.

City of St. Thomas – Police – Peer Connection Software

Fresh Start Support Services

Indwell

Neighbourhood Outreach for Kids, (Elgin)

St. Thomas Elgin Second Stage Housing

YMCA of Southwestern Ontario

YWCA St. Thomas-Elgin

Howard and Alice Williams Fund

Guided by direction provided in their estate, this fund has a focus on specific charities under a general Education theme.

Elgin County Railway Museum

St. Thomas-Elgin Public Art Centre

Janet and Marion Morgan Environmental Fund

A family fund in support of environmental, animal welfare, and wildlife protection agencies.

Animal Aide of St. Thomas Elgin

Aspen Valley Wildlife Sanctuary

Ecojustice

Pets/Friends for Life

The David Suzuki Foundation

Jim O'Grady Legacy Fund

Established in memory of Jim O'Grady and his love of sports to support registration and equipment for children who would otherwise not be able to participate in sporting activities due to lack of funds.

Family and Children's Services-Hockey Signup & YMCA

Junior Jumbo Poverty Initiative Fund

Established to support charitable activities/organizations which are specifically related to poverty initiatives and youth.

Faith Baptist Church of St. Thomas

Harvest Outreach International

St. Thomas Elgin Food Bank

The INN

YFC Elgin County – Youth Unlimited

YWCA St. Thomas-Elgin

Karn Family Fund

To support charitable causes by issuing grants, scholarships and bursaries as recommended by Advisors. JA South Western Ontario

Kiwanis Club of St. Thomas Endowment Fund

Promoting healthy living and active lifestyles for children.

Elgin Residential Hospice

YWCA of St. Thomas-Elgin

Lid Up 4 Branden Fund

In memory of Branden Pettit of St. Thomas, who died tragically as the result of a skateboarding accident at the age of 15, this Fund is dedicated to helmet safety in sports and recreation.

Elgin-St. Thomas Youth Employment Counselling Centre

Marg and Harold Carroll Fund

A family fund that supports local and regional charities and projects.

St. Thomas Elgin Food Bank

The Inn

The Salvation Army

McGregor Morris Fund

A family fund that supports art in public places.

Port Burwell Periscope Playhouse Inc.

Nancy, Jim and David Douglas Fund

A family fund established to support specific charities.

Elgin Residential Hospice

STEGH Foundation



Oak Tree Scholarship Fund

Annual scholarship for any resident of Southwold Township who is graduating, or has graduated, from secondary school and is going on to postsecondary studies in the areas of agriculture, the environment, veterinary services, horticulture, or equine care.

Margo McDougall

Sweetgrass Fund

A family fund established by Bob McCaig and Janet Taylor to support local charities and projects that help to build community.

Scholarships

Audrey Blackall, M. Ally Barnier, Anya Du, Heidi Acres, Anna Devries, Margo McDougall, Nate Dennis

Charities

Animal Aide of St. Thomas Elgin

Big Brothers Big Sisters of St. Thomas-Elgin

Elgin Residential Hospice

Harvest Outreach International

Neighbourhood Outreach for Kids, (Elgin)

St. Thomas Elgin Food Bank

The Christmas Shoppe

The Nameless

YWCA of St. Thomas-Elgin

Thomas C. Fox Fund

A family fund established by Tom Fox with proceeds to Elgin County charities.

Chrohn's and Colitis Canada

Turnberry Fund

A family fund established by Sine and William Herold in support of local and regional charities.

Elgin-St. Thomas Community Foundation

PKD Foundation of Canada

Upsdell Fund

Support of individual youth, or youth organizations, from St. Thomas or Elgin County, Ontario; and educational scholarships from St. Thomas or Elgin County, Ontario who may be over the age of 18 years.

Character Curtain Calls

Every Kid Rox

Municipality of Dutton-Dunwich – Baseball Dugouts

Pearce Williams Summer Camp & Retreat Facility

Windon Fund

Established to improve and enhance life of the City of St. Thomas in particular arts, culture, education, and natural environment.

City of St. Thomas – various projects, i.e., lighting/plaques for murals, sound system, interpretive signs

Elgin County Railway Museum – various projects, i.e., cycling tours, electric scooters, engineering study for adaptive re-use of building

Elgin-St. Thomas Youth Employment Counselling Centre – lighting at back of Ignite Youth Centre

STEAM Education Centres – new art education experience

and 'Students Build Cities' program

St. Thomas-Elgin Public Art Centre

Funds not granting in 2023 For a variety of reasons, the following funds did not issue grants in 2023:

- 2001 London Alliance Canada Summer Games Fund
- Elgin Children's Foundation Fund
- Elgin County Railway Museum Managed Fund
- Fingal Heritage Park Fund
- Frances Tarry COVID-19 Relief Fund
- Jaden Ella Wood Memorial Fund
- Jean and Fred Biehl Fund
- Joanne Brooks Community Fund
- June Evangeline Anne Horton Fund
- Kohler Family Fund
- Parks and Recreation/Pinafore Endowment Fund
- Pearce Williams United Church Christian Centre Endowment Fund
- Project Tiny Hope Fund
- Southwold Community Fund
- St. Thomas Elgin Tourist Association Scholarship Fund
- St. Thomas Elevated Park Fund
- YWCA of St. Thomas Elgin Endowment Fund

New Funds in 2023

Elgin – St. Thomas Community Foundation was pleased to work with local people to establish the following new funds in 2023.

Anita May Music & Mental Health Fund

The Anita May Fund is established in honour and memory of Anita, who advocated passionately for mental health care and used music as a vehicle for healing, education and enrichment. The funds raised are used to support those affected by mental illness, as well as alleviate barriers to music and arts programs for families suffering financial hardship.

Port Stanley Village Association Fund – 200 Trees for 200 Years

Created to support various projects determined by the Port Stanley Village Association. This includes 200 Trees for 200 Years.

White Family Fund

To support initiatives that address the needs of the broader community.



Upsdell Fund Grant Recipients

Dutton Dunwich–West Elgin Community Fund

(For a list of sub funds refer to page 9)

\$1000

YMCA of Elgin-St. Thomas to help subsidize memberships for those living in Dutton Dunwich-West Elgin.



\$3500

West Elgin Community Health Centre to rebuild community garden boxes.

\$500

Bachus-Page House Museum to purchase an AED (automated external defibrillator)



\$11,550

Granted since inception in 2020.

Notes of Gratitude & Impact

YMCA of Southwestern Ontario

The grant received from the Great-EST Needs Fund enabled nearly 1000 individuals to access the YMCA throughout December. Its impact fostered a strong sense of community, offering solace from isolation for some, introducing children to swimming for the first time, and providing a space for youth to cultivate friendships. Your generous support ignited the potential within hundreds of members of our community.

Natalie, a mother of six, expresses her gratitude for the subsidy, as it enables her to work outside of her home while her children are on holidays. She shares how when she collects her children at the end of the day they are full of smiles, sharing with enthusiasm the days activities, and looking forward to what the next day will hold. Her daughter who passed her swim test, conquering her fears. How this bolstered her confidence and how she learned that she can do hard things. There is value in trying, in failing, in perseverance, and in conquering goals. Natalie exclaims, what a wonderful place to learn these lessons.

The YMCA has a positive impact on many dimensions of life. Natalie shares that it's individuals and families like hers that put the "Y" in why it is important to support your local YMCA.

Christmas Care

The grant received supported Christmas Care in delivering over 1,400 hampers of food to area families in need. These included either a turkey, turkey roll or a ham. Additionally, toys were given out to children who had registered for the program with their parents. With ESCF's donation we increased our purchasing power. Thank you again to the Foundation for its support of St. Thomas-Elgin Christmas Care.

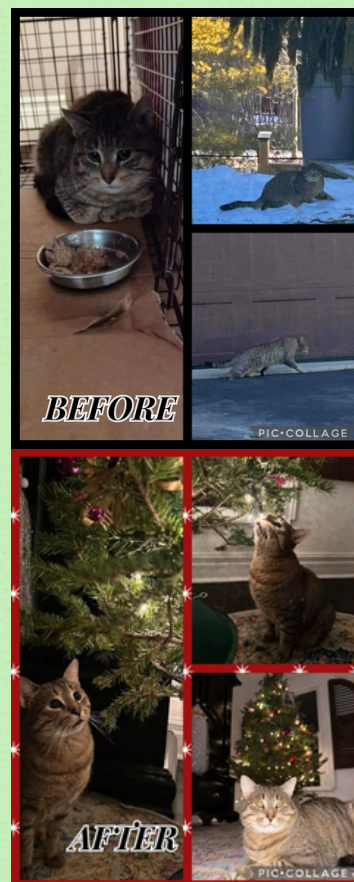


Animal Aide- A Story of Resilience

As we approach the first anniversary of Mr. Tabby's rescue, it remains clear that he was no ordinary cat; Mr. Tabby was a stray, left to fend for himself until fate led him to our shelter, Animal Aide.

Mr. Tabby was found homeless wandering the Lake Margaret Community. Upon arriving at Animal Aide of St. Thomas-Elgin he was immediately transported to the Elgin Animal Hospital for life-saving surgery. The Animal Aide volunteers rallied, their hearts brimming with compassion, determined to give Mr. Tabby the lifeline he so desperately craved. Ashley the Operations Manager took Mr. Tabby home and from day 1 she knew he deserved a comfortable life safe indoors from the elements and predators. Every day since rescue Mr. Tabby has surpassed expectations. His wounds healed both physically and emotionally. No longer a symbol of vulnerability, Mr. Tabby has transformed into a handsome young cat, his journey a testament to the dedication of his rescuers.

The grant from the Janet and Marion Morgan Environmental Fund within Elgin-St. Thomas Community Foundation enables us to provide the critical work of saving hundreds of cats and kittens. Grants such as yours enabled us to give Mr. Tabby a new life and home.



Community Action Network (CAN)-

Icelandic Prevention Model Community Forum

The ESCF provided funding to CAN for a forum centered around the Planet Youth Model for substance prevention. This model takes a holistic approach, viewing society as the patient rather than focusing solely on individuals. By addressing environmental risk and protective factors, it aims to enhance overall well-being. Community collaboration is key. The forum, attended by 72 members from diverse social sectors, garnered 30 signatories committed to furthering the conversation. Its success has propelled ongoing work, with a commitment to align with Planet Youth in 2024.

Youth Unlimited YFC Elgin

Your gift helps us to ensure that we can continue to offer our overnight emergency support shelter which has seen a significant increase in use this year. We continue to provide a safe overnight place for homeless youth between 16-24. We do not want to see youth being placed in vulnerable situations by sleeping on the streets. When they stay with us we also feed them, listen to them, give them clothing and other basic supplies. We also run groups that help build a sense of community and friendships. Our Junk Journaling program provides a clear message of belonging, that participants are not junk, they are not mistakes; rather they are unique and special. We explore this by creating journals through recycling, and repurposing items, creating their own one-of-a-kind journal.

Plus, our gardens help to feed our neighbourhoods and families.

All of these activities are supported by your generosity, without it, we wouldn't be able to continue to make a positive impact in the youth living in St. Thomas and Elgin.

200 People Who Care

Sponsored by:



100 **Plus** People Each Pledging \$100 to raise \$10,000 **Plus** for Local Charity. Together making a big impact!

Thanks to the generosity of 200 individuals, each contributing \$100, we not only hit our goal of raising \$20,000 for local charity but also achieved a fantastic milestone. For the first time, every participating charity received a financial lift at our wrap-up event.

The theme of breaking down barriers echoed throughout, addressing vital issues like reducing isolation, promoting caregivers' self-care, igniting ambitious dreams in youth, offering tools and support for parents raising wonderfully complex children, creating a safe haven for 2SLGBTQI+ youth, and infusing indigenous healing traditions into an addictions and mental health recovery retreat.

All the presenting charities were deserving, but a special shoutout goes to Somerset Recovery Retreat, crowned the winner of the \$10,000 prize. Thank you once again for your incredible support!

Somerset Recovery Organization

Spirit of Hope Program

12-step holistic retreat for self-identified women who experience challenges with mental health and addiction utilizing indigenous healing traditions such as self-love meditation, sound healing, smudging, drumming and more.



Alzheimer Society Southwest Partners

The Social

Addresses a gap in accessible programming for those living with dementia and the need for respite time for their caregivers. Program activities stimulate cognitive, emotional, social, spiritual, vocational and physical well-being.



Big Brothers Big Sisters of St. Thomas-Elgin

The Spark Program-Igniting Possibility in Youth

BBBS enables life-changing mentoring relationships to ignite the power and potential of young people. The Spark program is an educational initiative that aims to bridge the gap for youth grades 9-12 who are struggling to envision themselves beyond high school by providing opportunities to explore various educational and career options.

The program aims to spark big dreams in youth.



Every Kid Rox

Parent Hub

Every Kid Rox is a dedicated platform designed to facilitate the journey of complex need parenting by offering valuable information and practical tools. Their mission is to empower parents through a community that centres around the parent's perspective, fostering the sharing of lived experiences and providing tools to simplify the intricate path of complex need parenting.



Queer Qlub

Safe Haven

Queer Qlub was created to provide a safe and social setting for the 2SLGBTQ+ youth in St. Thomas and Elgin County. The goal is to provide a space for youth to find themselves and be safe doing so.







Elgin-St.Thomas Community Foundation

(519) 637-8230

info@escf.ca escf.ca

Visit our office within the CASO Station

750 Talbot Street, Suite 103

St. Thomas, ON N5P 1E2

Charitable Registration #86533 7109 RR0001